



Have your say



The **LEEP Transition Plan** and a summary version will be on public exhibition through the Lithgow Emerging Economy Project website: www.leep.lithgow.com until Monday, 17 July 2023. Council will also hold a community information session at the Maldhan Ngurr Ngurra Lithgow Transformation Hub on Thursday, 22 June 2023.

Council invites you to review the plan to understand the needs and opportunities the transition presents, and to identify any issues or ideas that may support a stronger approach to the pathway ahead. Your feedback will inform our implementation approach.

We invite you to consider the following questions:

- What do you like about the vision and pathway for Lithgow in 2030?
- What would you change?
- Is there anything missing?
- Would you like to continue to be involved in the transition? If so, how would you like to be involved?



Written submissions should be addressed to:

General Manager
PO Box 19
Lithgow NSW 2790

Or via email to council@lithgow.nsw.gov.au.

Submissions must be received by Council no later than 4:30pm on Monday, 17 July 2023.

For further information:

To find out more information on the **Lithgow Emerging Economy Project**, including a detailed summary of the Transition Plan and the full report, visit www.leep.lithgow.com.



Shaping the future of Lithgow

The Australian energy sector is undergoing significant change that is affecting communities with a reliance on coal mining and coal-fired power generation.

Lithgow City Council and the NSW Government have commissioned the Lithgow Emerging Economy Project to help Lithgow plan a successful energy transition to become a modern, diverse economy with new job opportunities.

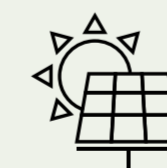
The project has produced a Transition Plan to reinvent and invigorate Lithgow's economy by building on our heritage of industrial innovation, our regional endowments, and our economic advantages.

Lithgow City Council invites the *community* to be involved in this exciting journey to shape the future of our city.

This document provides an overview of the plan and how you can have your *say*.



The drivers of change



The next decade will see significant change in Australia's energy sector. Nationally, development of **renewable energy** infrastructure is accelerating to progressively replace coal-fired power generation.



Together, coal mining and electricity supply, including the local businesses that service them, contribute almost **46 per cent of Gross Value Added (GVA) to the Lithgow economy** and employ more than 16% of our workforce.



Developing new opportunities to balance the economic contribution that coal mining and coal-fired power generation brings to Lithgow is a **challenging but exciting task** that will require coordinated action from all three tiers of government. Work needs to begin now.



The transition will require ambition, leadership and significant effort to attract **new investment** to expand industries and businesses, and create diverse, skilled jobs, including for young people and workers currently in the coal and energy sectors.

Exciting projects are already underway!

The Lithgow Emerging Economy Project

Lithgow LGA is in a **pivotal location** in Australia's energy and transport system, the link between the fast-growing Western Sydney to our east and the broad Central West and Orana to the west. We are well positioned to take advantage of regional economic opportunities such as the new airport in Western Sydney, inland rail and the Central-West Orana Renewable Energy Zone. The area's rich natural, historical and Indigenous heritage also provide opportunities for growth in tourism.

The Transition Plan highlights that Lithgow has endowments that support new forms of energy production, as well as transport and energy distribution infrastructure. It also has a solid base of the right sort of human capital and know-how required by the sectors that have the greatest potential for growth and job creation in the LGA.

The Transition Plan proposes a vision for the future of Lithgow that outlines a pathway to economic diversification.

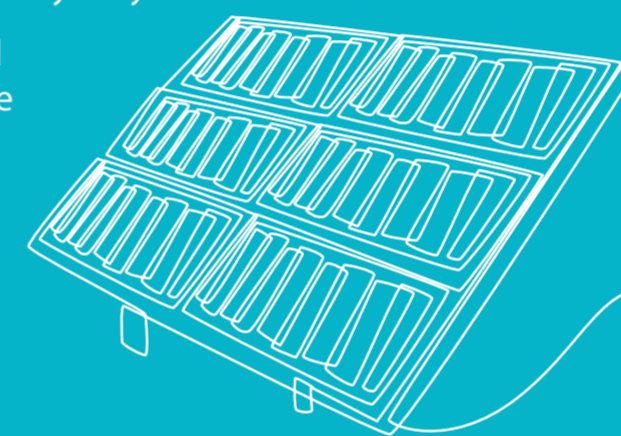


Ensuring a resilient, diverse economy

Renewables

The Transition Plan shows that the greatest opportunities lie in building on Lithgow's energy infrastructure, particularly transmission lines, land, solar and water resources, to facilitate the switch to **renewables** production locally, and enable electricity supply from the Central-West Orana Renewable Energy Zone to greater Sydney.

Solar power, pumped hydro, battery storage and green hydrogen production have strong potential.

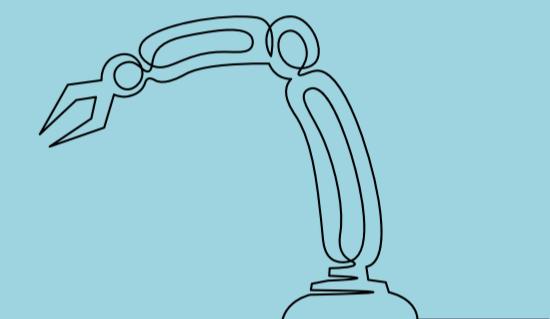


Manufacturing

Lithgow LGA is well placed to grow an **advanced, clean manufacturing sector** that is an anchor of the future economy. This will build on our history of industrial innovation and leverage our skilled workforce, transport infrastructure and potential for renewable energy production. Opportunities include:

Opportunities include:

- Defence and related metal fabrication
- Renewable energy components and clean technology innovation, such as green building materials
- Circular economy manufacturing
- Transport equipment manufacturing.



Proposed Vision

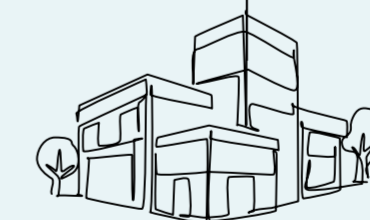


Tourism has the potential to contribute more to Lithgow's economy and create jobs for young workers. Strategic investment and strong marketing initiatives can capitalise on the diversity and uniqueness of local natural, historical and cultural endowments, such as the Gardens of Stone.

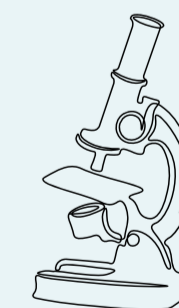


While mining and electricity contribute the highest value to the local economy, the **health, ageing and social assistance** sector is the largest employer in the region. It will be vital to maintain this, centred around a Health, Ageing and Innovation Precinct that promotes the health and wellbeing of the community and consumers from neighbouring areas.

The plan also recommends that Lithgow continues to position itself as a respected base for **decentralised government services**, which provide a steady economic foundation for the city.



More **advanced local skills** in science, technology, engineering, the arts and maths (STEAM) will need to be developed, alongside initiatives to make Lithgow and its villages a great place to live and work.



Supporting the coal transition



The plan outlines approaches to work with the coal and electricity sector, unions and training organisations to support workers and local suppliers to be well prepared for the future transition away from fossil fuels so they can engage in other industries, including renewables. It will also be **important** to repurpose or rehabilitate infrastructure and natural resources as future economic and community assets.

Leading for growth

In partnership, **Lithgow City Council**, the NSW and Australian Governments, will work with stakeholders to create a positive investment environment, attract new industries and support businesses to expand. This will be enabled by a review of land use planning and housing availability.

